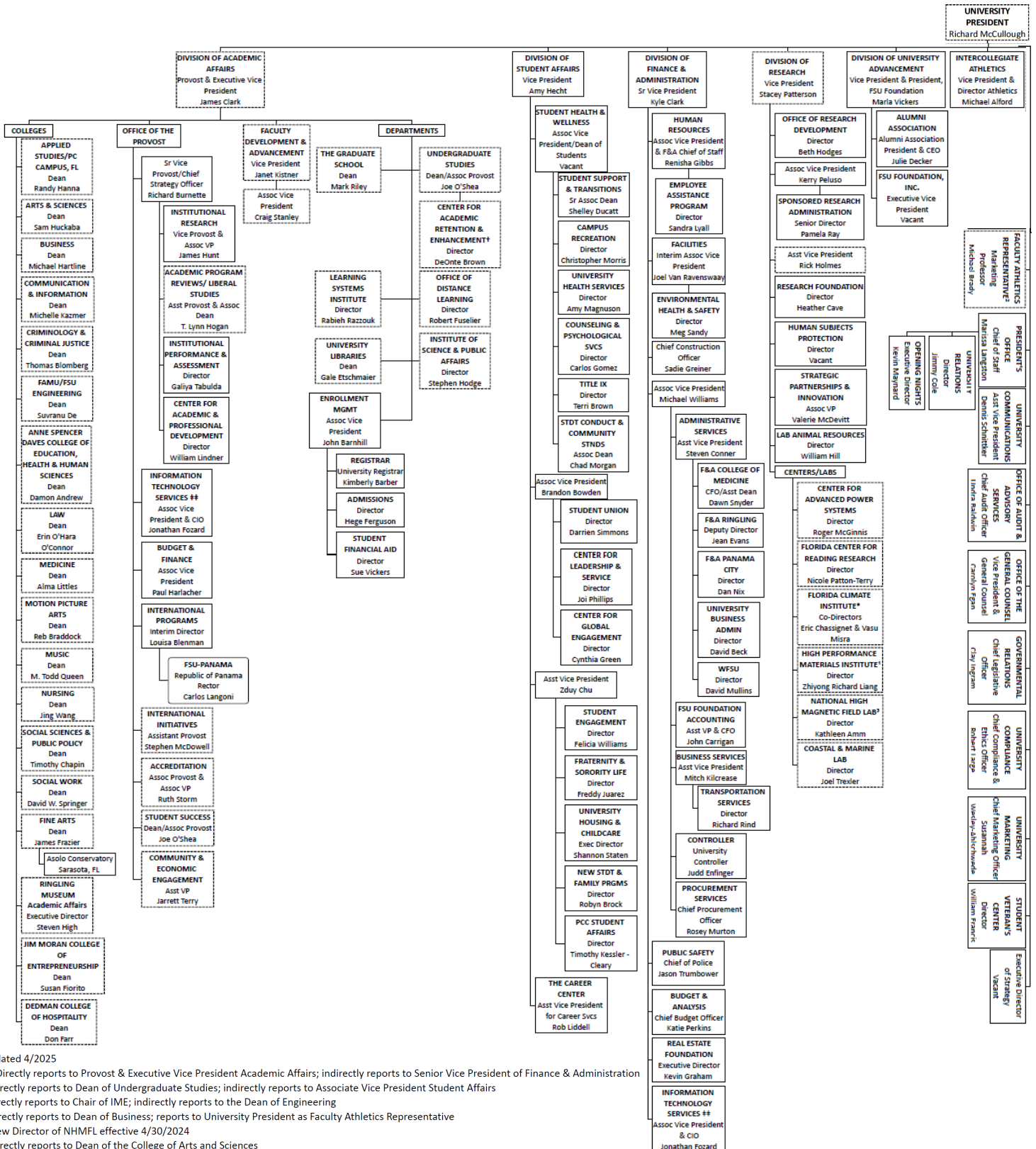


Organizational Chart

FLORIDA STATE UNIVERSITY
University Leadership

BOARD OF
TRUSTEES



Updated 4/2025

** Directly reports to Provost & Executive Vice President Academic Affairs; indirectly reports to Senior Vice President of Finance & Administration

† Directly reports to Dean of Undergraduate Studies; indirectly reports to Associate Vice President Student Affairs

¹ Directly reports to Chair of IME; indirectly reports to the Dean of Engineering

² Directly reports to Dean of Business; reports to University President as Faculty Athletics Representative

³ New Director of NHMFL effective 4/30/2024

* Directly reports to Dean of the College of Arts and Sciences

Online Resource: View this organizational chart online at: hr.fsu.edu/sections/compensation-services/university-organization-charts