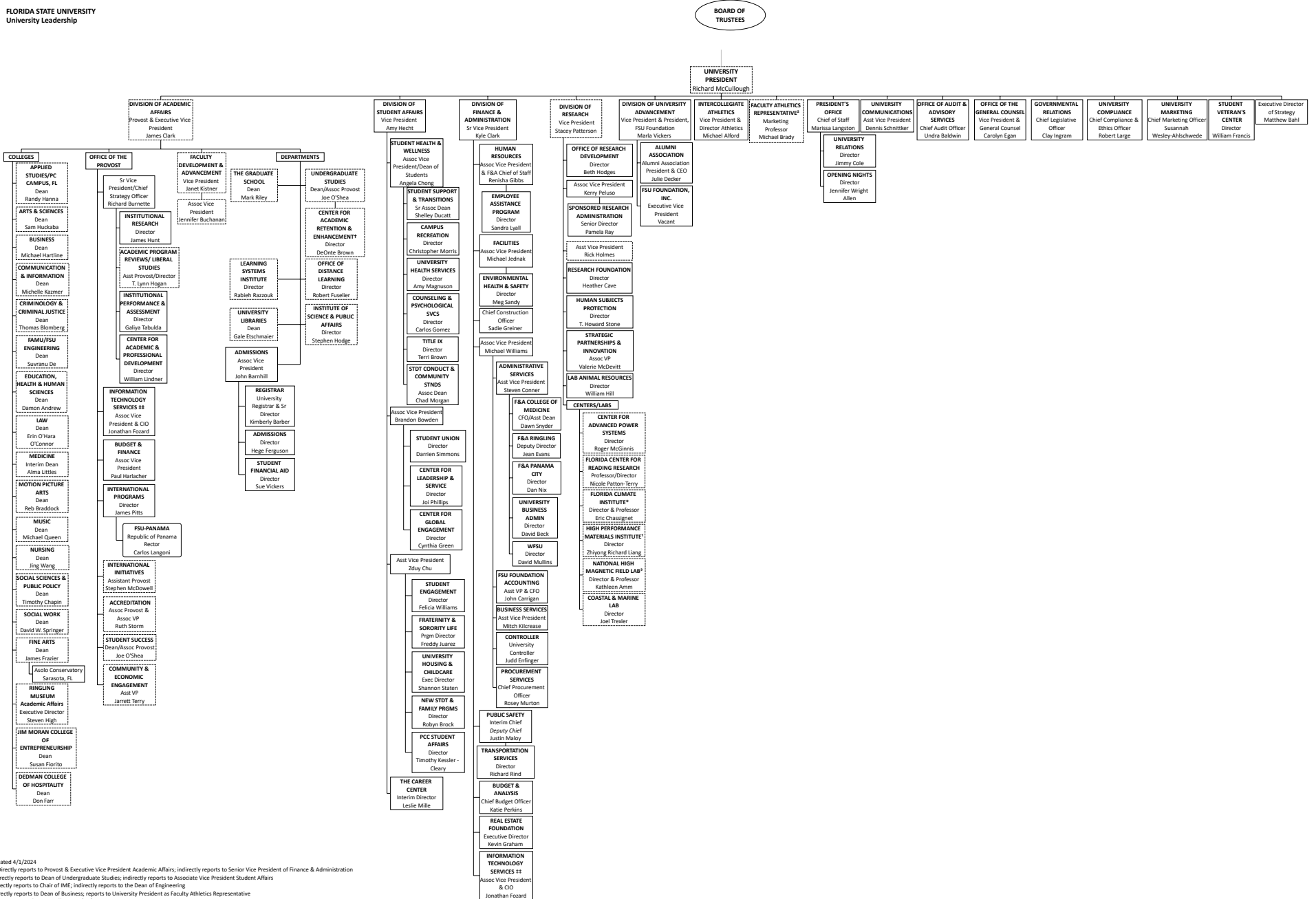


FLORIDA STATE UNIVERSITY
University Leadership



Updated 4/1/2024
 †† Directly reports to Provost & Executive Vice President Academic Affairs; indirectly reports to Senior Vice President of Finance & Administration
 † Directly reports to Dean of Undergraduate Studies; indirectly reports to Associate Vice President Student Affairs
 † Directly reports to Chair of IME; indirectly reports to the Dean of Engineering
 † Directly reports to Dean of Business; reports to University President as Faculty Athletics Representative
 * New Director of NIMFL effective 4/30/2024
 * Directly reports to Dean of the College of Arts and Sciences